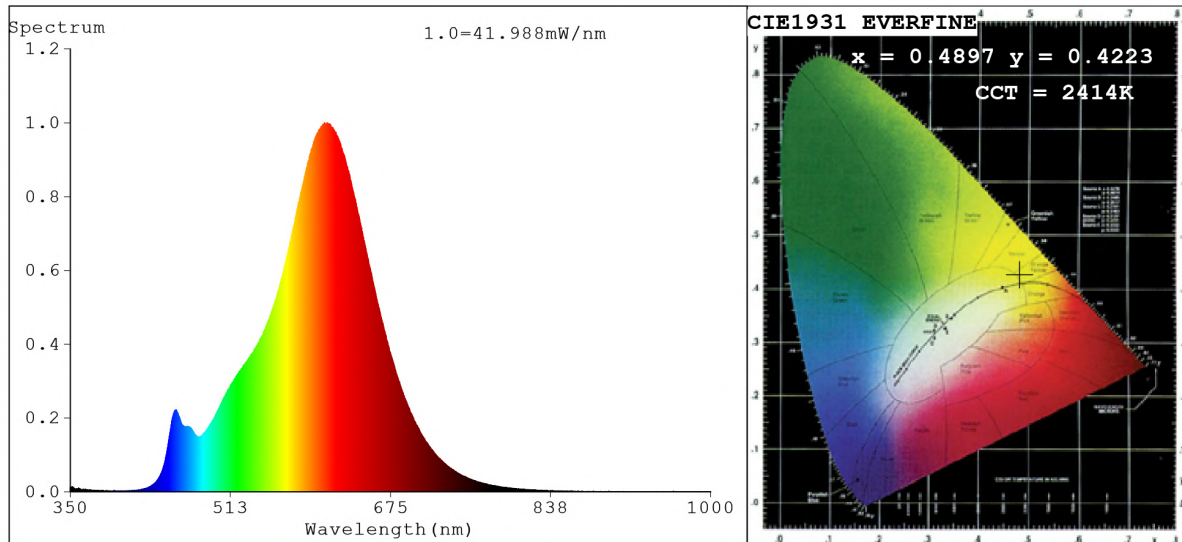


Spectrum Test Report



Color Parameters:

Chromaticity Coordinate: $x=0.4897$ $y=0.4223$ $u'=0.2764$ $v'=0.5362$
 CCT=2414K (Duv=0.0024) Dominant WL:Ld =585.1nm Purity=73.8%
 Ratio:R=27.8% G=70.3% B=2.0%; Peak WL:Lp=607.8nm FWHM=107.3nm
 Render Index:Ra=81.9 CRI=77.5 TM30:Rf=81 Rg=90
 R1 =81 R2 =93 R3 =93 R4 =79 R5 =81 R6 =94 R7 =80
 R8 =55 R9 =7 R10=85 R11=79 R12=79 R13=84 R14=97 R15=72

Photo Parameters:

Flux = 1752 lm Eff. : 114.62 lm/W Fe = 5.576 W Scotopic:1900.9 S/P:1.0847

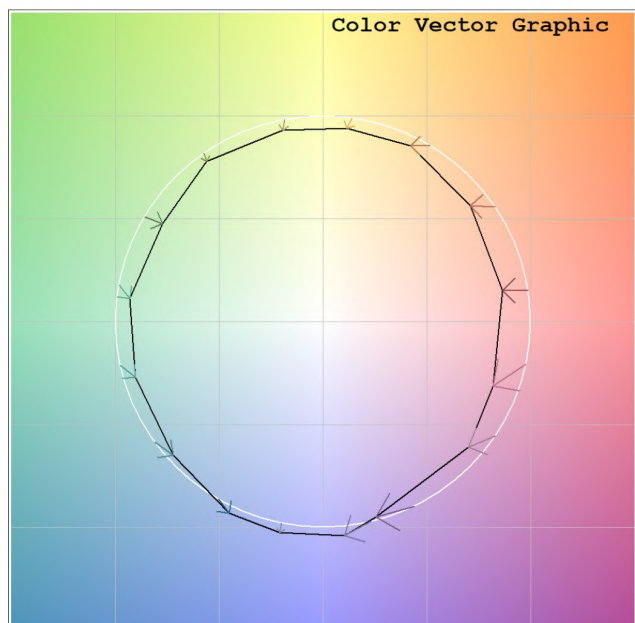
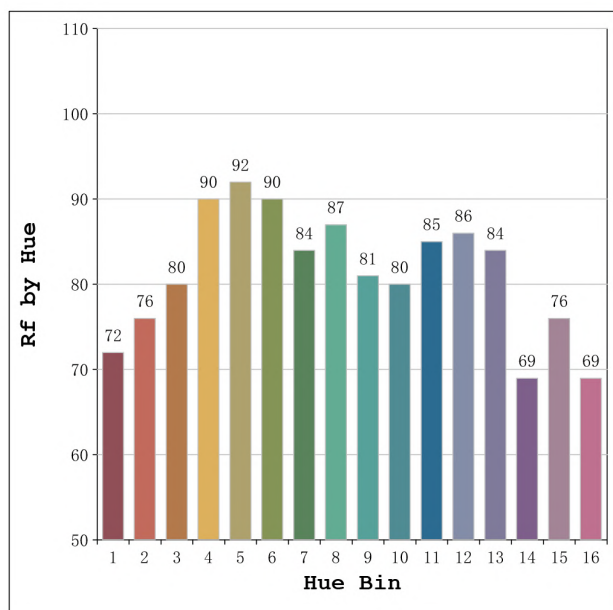
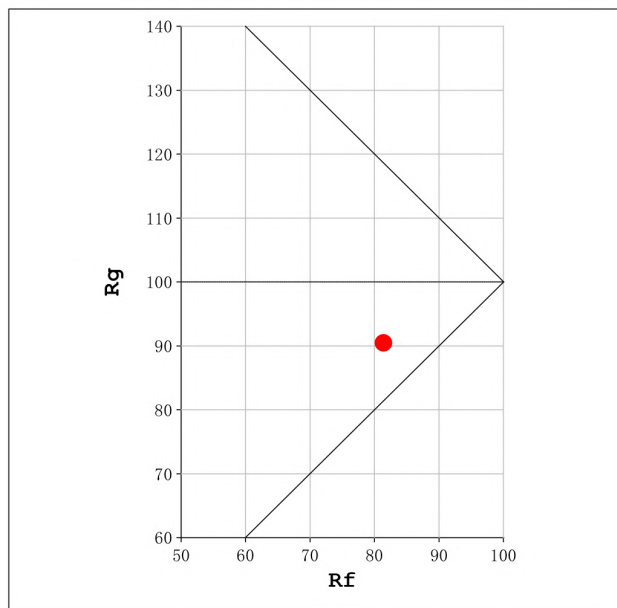
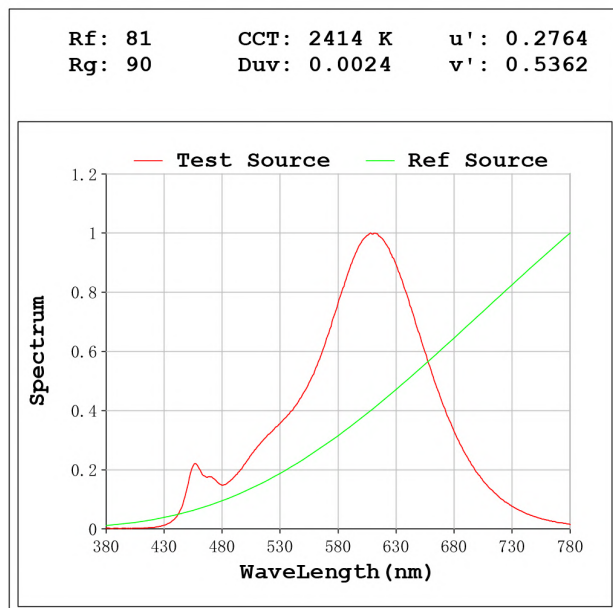
Electrical parameters:

V = 23.998 V I = 0.6371 A P = 15.29 W PF = 1.000

Status: Integral T = 500 ms Ip = 39271 (60%)

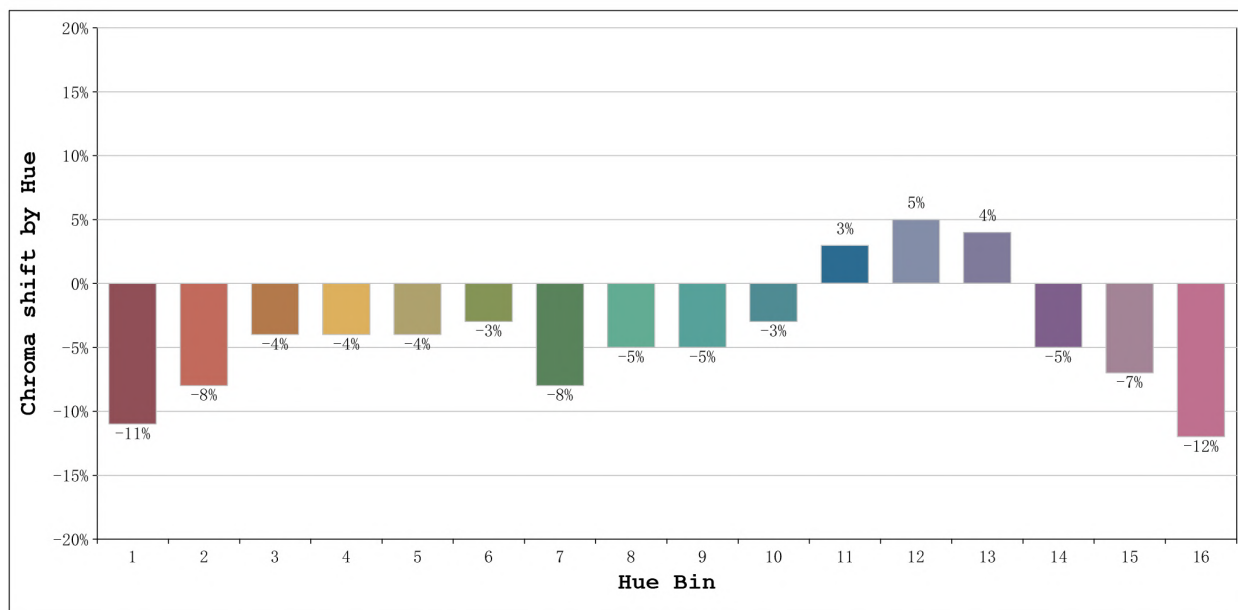
Model:Ecoled Élite 15 2400K
 Tester:Sergio Carneros
 Temperature:22Deg
 Manufacturer:Luz Negra S.L

Number: 31.015
 Date:14-12-2023 11:21:54
 Humidity:57%
 Remarks:100cm de tira flexible



Model:Ecoled Élite 15 2400K
 Tester:Sergio Carneros
 Temperature:22Deg
 Manufacturer:Luz Negra S.L

Number: 31.015
 Date:14-12-2023 11:21:54
 Humidity:57%
 Remarks:100cm de tira flexible



			Graphic shift(%)	
Hue Bin	Hue Angle	Rf	Chroma	Hue
1	0.0° - 22.5°	72	-11	2
2	22.5° - 45.0°	76	-8	7
3	45.0° - 67.5°	80	-4	8
4	67.5° - 90.0°	90	-4	1
5	90.0° - 112.5°	92	-4	2
6	112.5° - 135.0°	90	-3	1
7	135.0° - 157.5°	84	-8	-1
8	157.5° - 180.0°	87	-5	6
9	180.0° - 202.5°	81	-5	7
10	202.5° - 225.0°	80	-3	10
11	225.0° - 247.5°	85	3	8
12	247.5° - 270.0°	86	5	0
13	270.0° - 292.5°	84	4	-13
14	292.5° - 315.0°	69	-5	-17
15	315.0° - 337.5°	76	-7	-11
16	337.5° - 360.0°	69	-12	-13

Model:Ecoled Élite 15 2400K
 Tester:Sergio Carneros
 Temperature:22Deg
 Manufacturer:Luz Negra S.L

Number: 31.015
 Date:14-12-2023 11:21:54
 Humidity:57%
 Remarks:100cm de tira flexible